

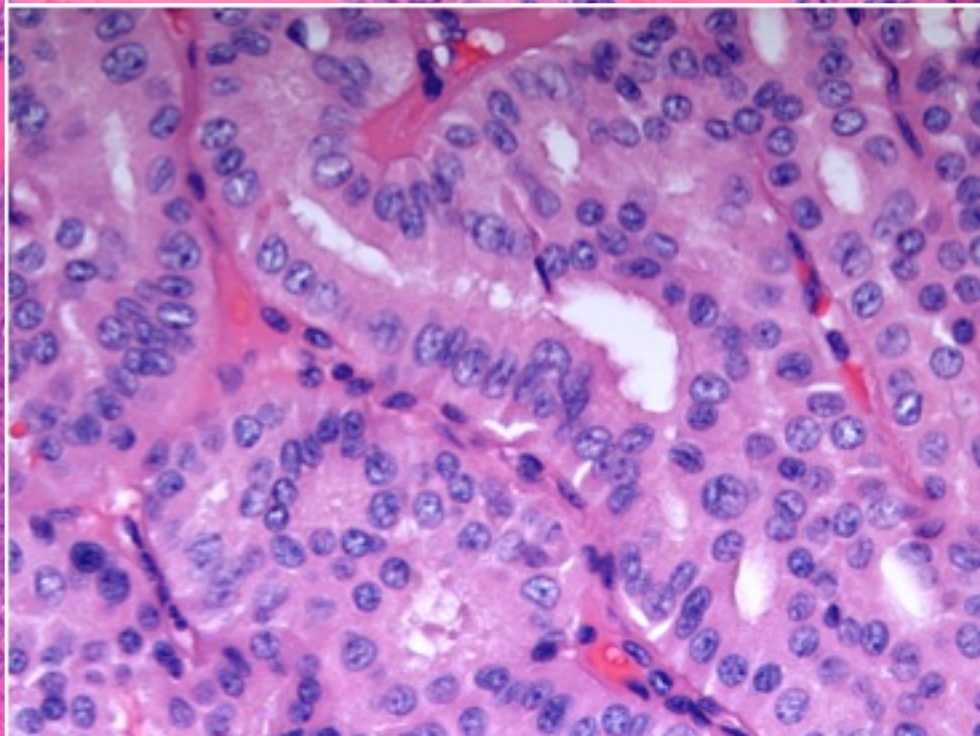
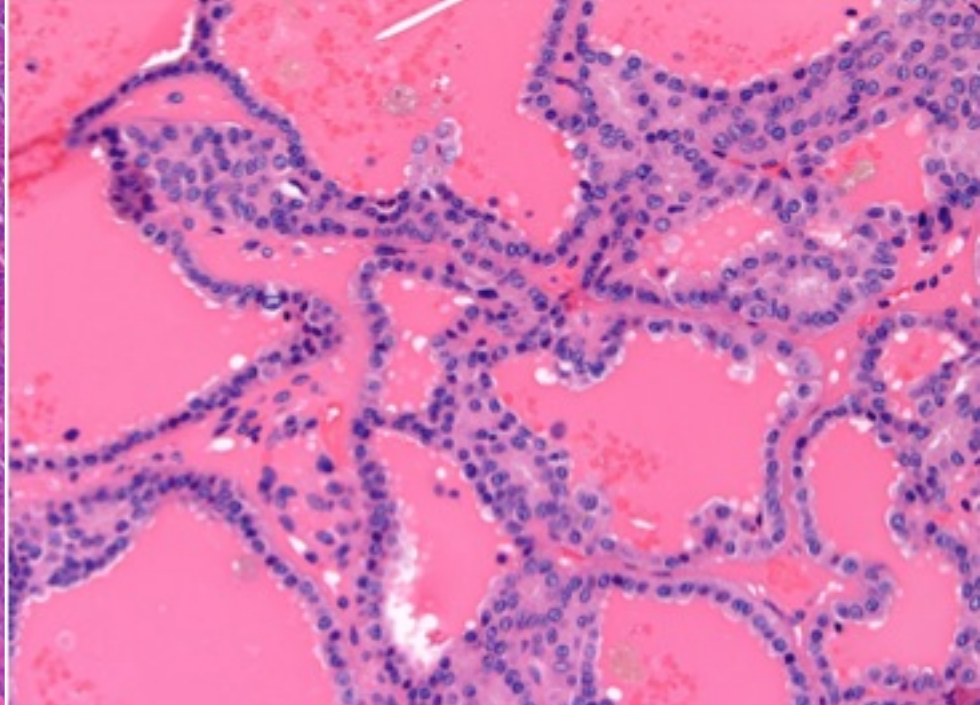
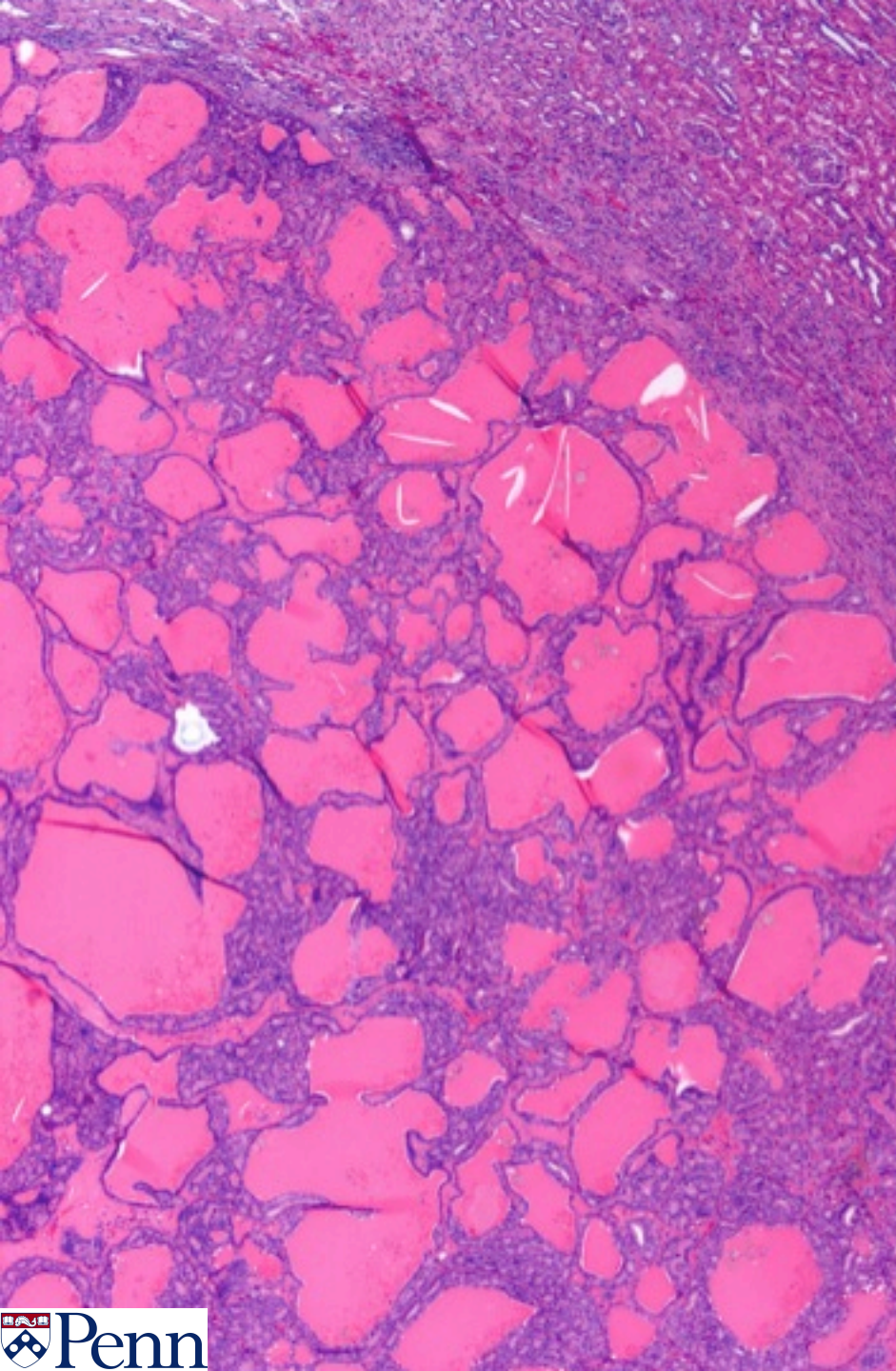


**GENITOURINARY
INTERESTING CASE #2**

57-year-old woman with a renal mass

Submitted by Sharon Song, MD

Prepared by Sharon Song, MD



Thyroid-like follicular carcinoma of the kidney

Gross: Well-circumscribed with a fibrous capsule, homogeneous, brown

Histology: Mimics well-differentiated thyroid follicular neoplasms with macro- and microfollicles lined by cells with a moderate amount of amphophilic to eosinophilic cytoplasm and containing eosinophilic colloid-like material composed of Tamm-Horsfall glycoprotein, the most abundant protein in normal urine.

Ancillary studies: Metastasis should be excluded by IHC and clinical history. PAX8+, TTF1-, thyroglobulin-.

Differential diagnosis: Metastatic thyroid carcinoma, metastatic struma ovarii

Pearl: This thyroid-like appearance can be seen in other well-known subtypes of renal cell carcinoma (RCC), like clear cell RCC, oncocytoma, tubules of papillary RCC and metanephric adenoma. However, when present, these changes are usually focal, in contrast to TLFC-K where follicles containing dense eosinophilic material constitute the main component of the tumor.