

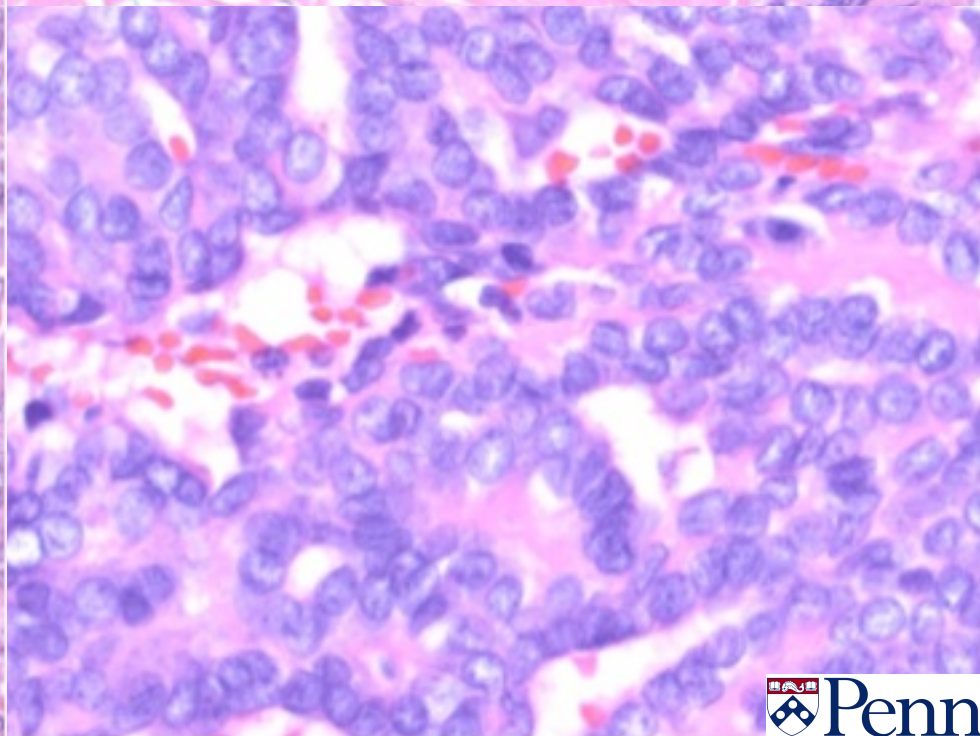
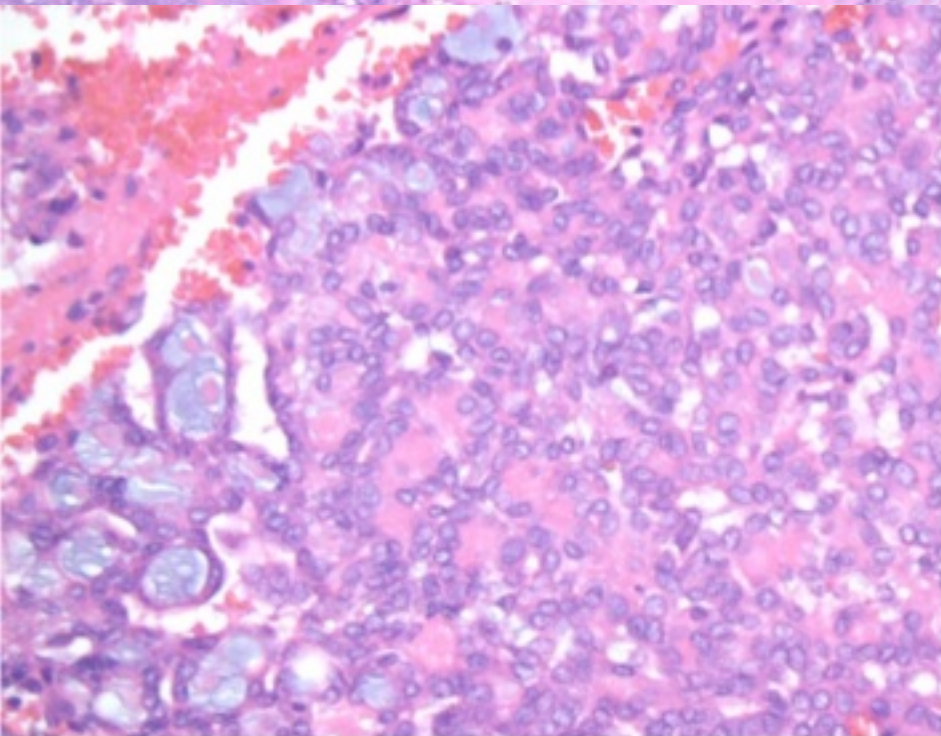
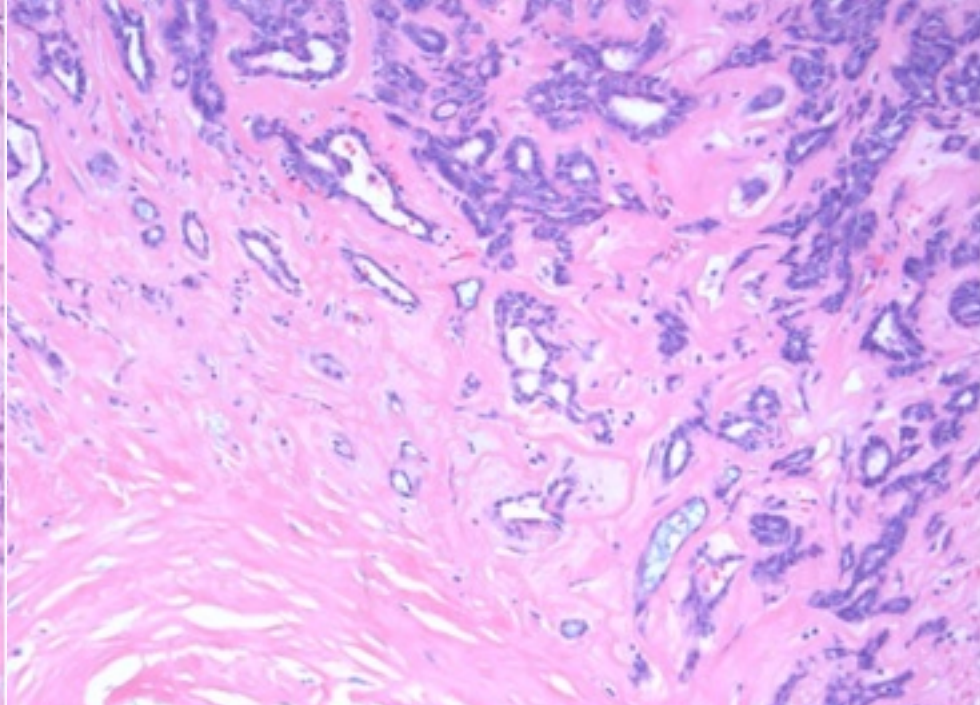
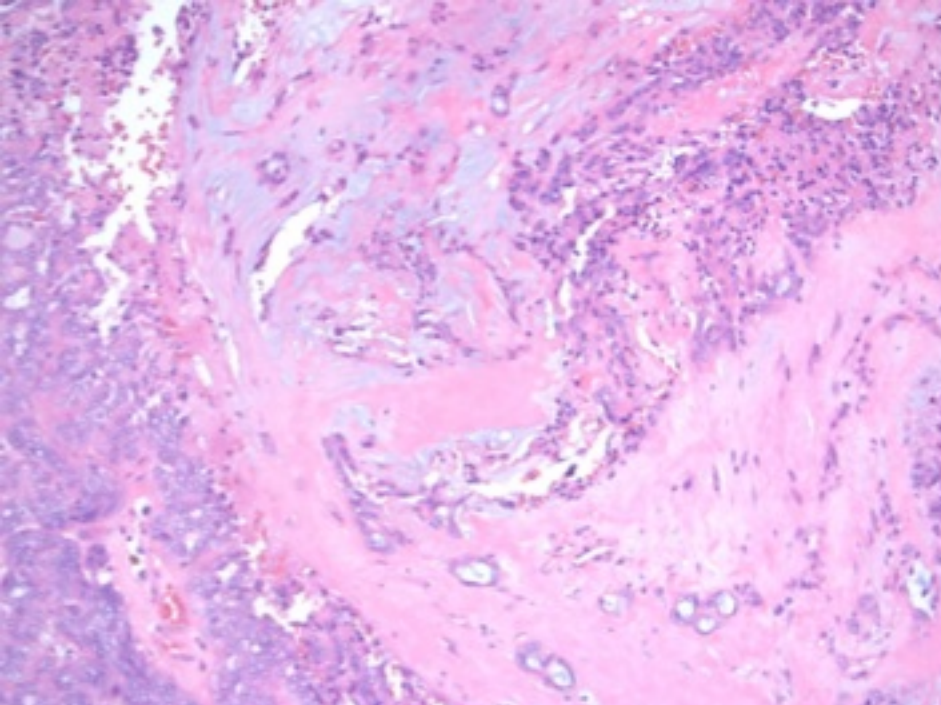


HEAD & NECK INTERESTING CASE #3

54-year-old man with a 3.6 cm right neck mass

Submitted by Kathleen Montone, MD

Prepared by Sharon Song, MD



Cribriform adenocarcinoma of the minor salivary glands

Gross: Unencapsulated, white-tan to gray, hard consistency

Histology: Lobules with cribriform and solid growth patterns. Nuclei are ovoid to irregular with delicate open chromatin and small, peripherally located nucleoli (may resemble papillary thyroid carcinoma). Mucinous spindle cell myofibroblastic stromal septa (1/3 cases).

Ancillary studies: (+) CK7, AE1/3, S100, CAM5.2, SMA, Calponin; (-) EMA, p40, ER, PR, TTF1, thyroglobulin

Clinical: Tendency to metastasize but generally has good prognosis

Differential diagnosis: Polymorphous low-grade adenocarcinoma, metastatic papillary thyroid carcinoma