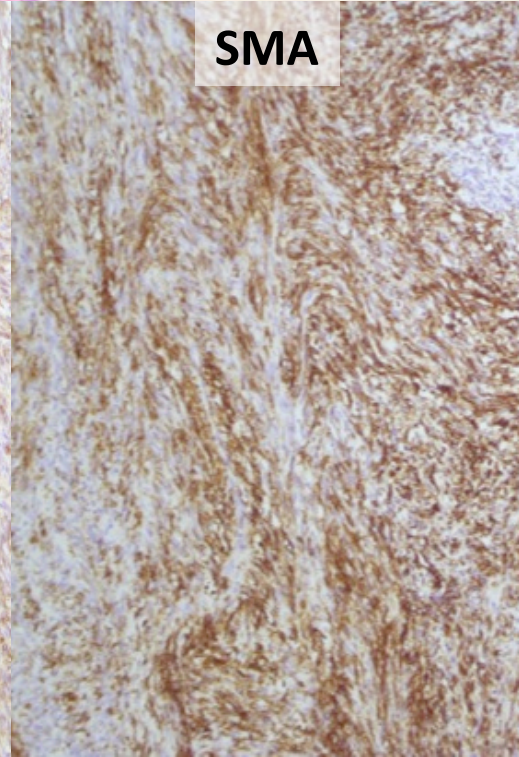
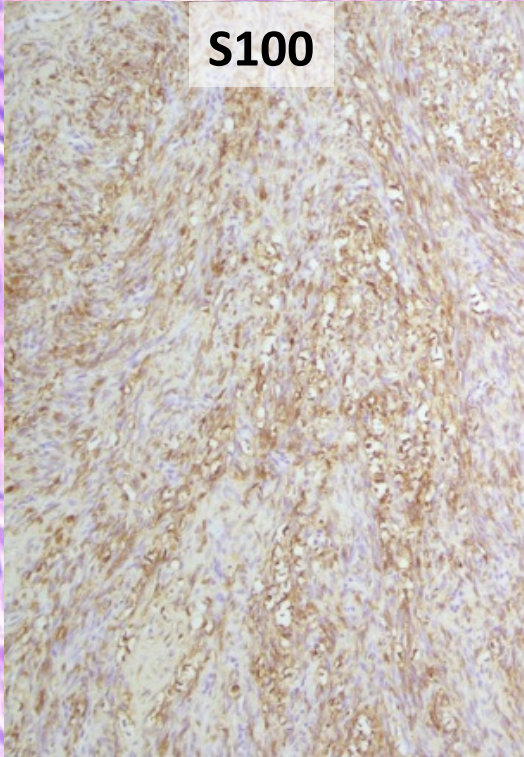
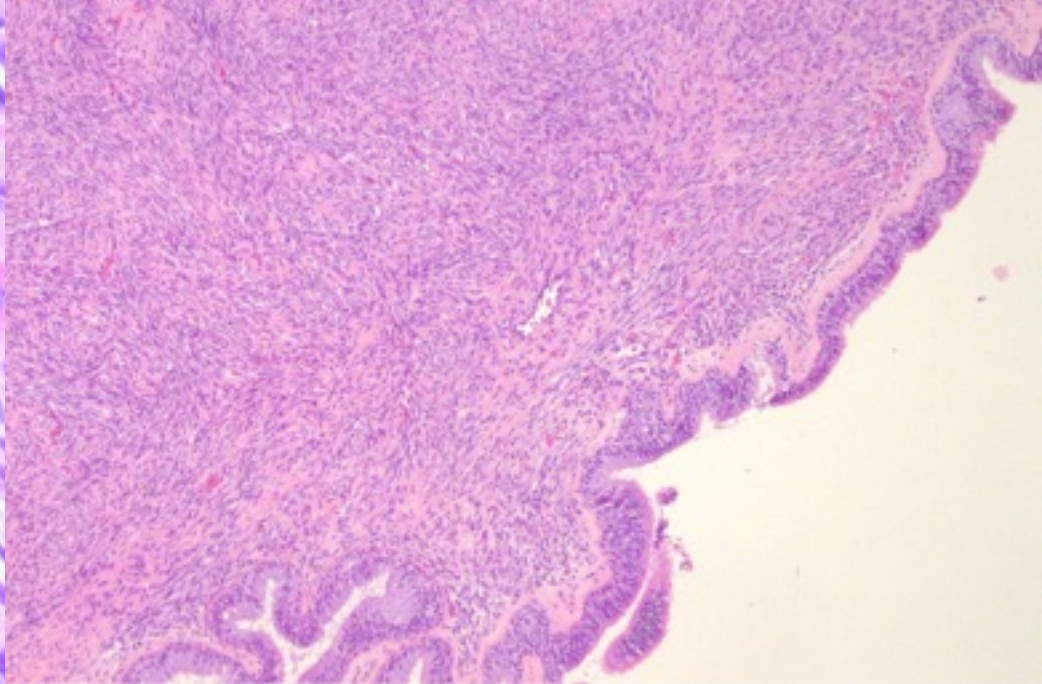
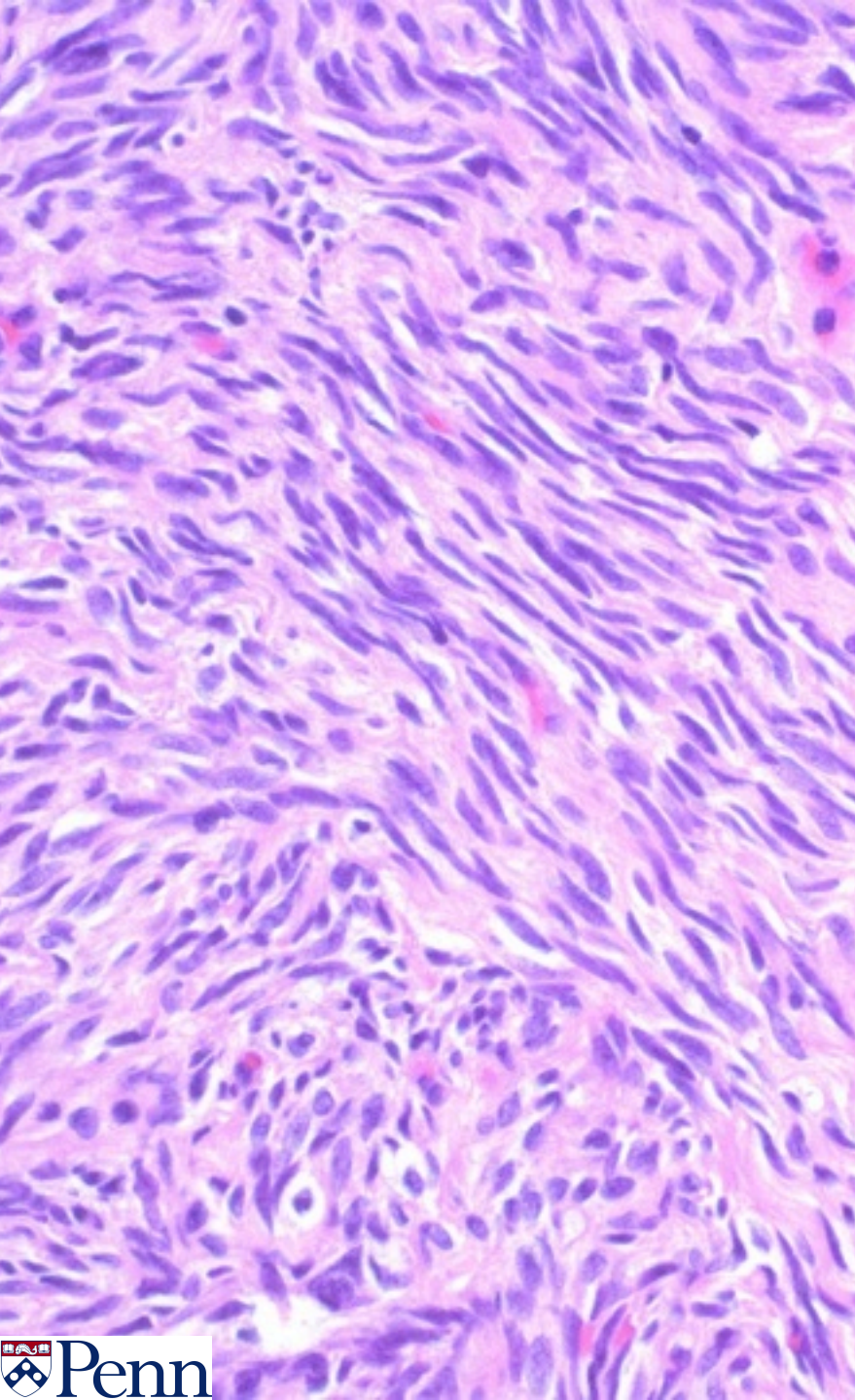




HEAD & NECK INTERESTING CASE #4

74-year-old female with an extradural tumor compressing the right frontal lobe

Submitted by Kathleen Montone, MD
Prepared by Sharon Song, MD



Biphenotypic Sinonasal Sarcoma

AKA Low-grade sinonasal sarcoma with neural and myogenic differentiation

Clinical: Most commonly affects ethmoid sinus and superior nasal cavity. Local recurrences common but no metastases

Histology: Highly cellular spindle cell proliferation of uniform cells with elongated, focally wavy nuclei, forming fascicles with a herringbone pattern. Intermixed with staghorn vessels and delicate strands of intercellular collagen. Scattered lymphocytes throughout tumor. No significant necrosis, ulceration, hemorrhage or mitotic activity. Associated with respiratory epithelial proliferation.

Ancillary studies: S100+, SMA+; *focally positive* for desmin, EMA, CD34, AE1/3; SOX10-, myogenin-. PAX3-MAML3 gene fusion; rarely, PAX3-NCOA-1 or FOXO1

Differential diagnosis: Fibrosarcoma, leiomyosarcoma, MPNST, cellular schwannoma, synovial sarcoma